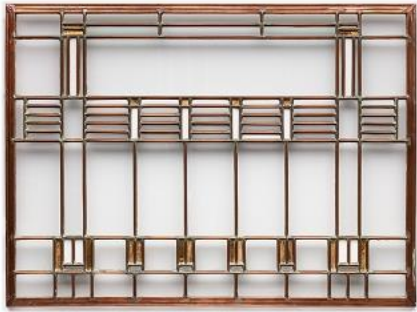


Now On View in Entryway:



Frank Lloyd Wright (1867–1959; American)
Art Glass Window for the Ward W. Willits House, 1901
glass with copper caming
15 1/4 x 20 3/4 x 3/8 in.
unmarked
2020.029.002



Maynard Tischler (b. 1932; American)
SECOND ANNUAL FAMILY VACATION: REMEMBERING CHARLES
ADDAMS, 2006
ceramic
8 x 5 1/4 x 15 1/4 in.
unsigned
2007.0914a

Now On View in Kirkland Gallery 1:



Vance Kirkland (1904–1981; American)
FOGGY LANDSCAPE (Colorado), 1943
watercolor on paper
29 x 41 in.
lower right corner
Signed "Vance Kirkland 1943".
VK1943.14



Vance Kirkland (1904–1981; American)
RUINS NEAR CENTRAL CITY, 1940
watercolor on paper
22 1/2 x 30 in.
lower right corner
Signed "Vance Kirkland 1940".
VK1940.09



Vance Kirkland (1904–1981; American)
SPRING TULIPS, 1937
watercolor on paper
21 1/2 x 29 1/4 in.
lower left
Signed "Vance Kirkland 1937".
VK1937.03



Vance Kirkland (1904–1981; American)
CAPRI, 1930
watercolor on paper
14 1/2 x 19 1/2 x 1 in.
lower left corner
Signed "CAPRI, ITALY, 1930 VANCE H. KIRKLAND".
VK1930.16



Vance Kirkland (1904–1981; American)
LANDSCAPE WITH ROCKS (Ohio), 1927
watercolor on paper
15 x 20 in.
lower left corner
Signed "Vance H. Kirkland '27."
VK1927.08

Now On View in Promenade Gallery 2:



Archie Musick (1902–1978; American)

THE MOVING FINGER WRITES...,
mixed media on board
17 1/8 x 20 in.
lower left corner
signed, "A. Musick" in white
2022.089.001



Bořek Šípek (1949–2016; Czech)

Puzzle Chair, 1989–1992
wood, leather and upholstery
35 1/2 x 37 1/2 x 28 in.
unmarked
2022.088.001



Frank Lloyd Wright (1867–1959; American)

Chandelier for the Benjamin Adelman House, c. 1957
wood and plastic
39 3/4 x 10 x 10 in.
unmarked
2022.018.001



herbert bayer (1900–1985; American, b. Austria)

owl people, 1948
oil on canvas
23 x 17 1/2 in.
lower right corner
signed, "bayer 48"
2015.0794



Frank Lloyd Wright (1867–1959; American)

Chair from the SC JOHNSON WAX Building, Racine, WI, 1937
metal and upholstery
34 1/2 x 18 1/2 x 22 in.
unmarked
2011.0177



Tabor Utley (1891–1978; American)

THE STORM (Colorado Rocky Mountains), c. 1950
oil on canvas
18 x 24 in.
lower left corner
"Painting by Tabor Utley / Authenticated by Carol
Bowles–Tyndale (step–daughter)" on stretcher rear in black
marker.
"P127" and "L228" on stretcher rear in black marker.
"480.30 18x24 A.S.W." and "L22804" on frame rear in black
marker.
2006.0445

Now On View in Promenade Gallery 2:



Warren McArthur (1885–1961; American)
ARIZONA BILTMORE Jardinière Stand, 1927–1928
metal
71 3/4 x 32 3/4 x 32 3/4 in.
unmarked
2004.2005



Otis Dozier (1904–1987; American)
Untitled (West Texas Landscape), c. 1978
oil on board
18 x 39 3/4 in.
lower left corner
Signed "Otis Dozier".
2004.1040



Belmet Products, Inc. (1919–present; Brooklyn, NY)
ROLLODOR Smoking Stand, 1930s
metal
23 x 6 x 6 in.
bottom
On chrome plate under ashtray: "The Belmet / Rollodor /
REG US PAT OFF / US PAT 1775610.1833517.1905123 /
Other Patents Pending / Canada Patent 310267 / Made in
U.S.A."

Now On View in Arts & Crafts Gallery 3:



Allen Tupper True (1881–1955; American)
THE MOUNTAIN PONY, 1908
 oil on canvas
 24 x 16 in.
 unsigned
 2021.058.002



Craftwood Shops (1912–1923; Manitou Springs, CO)
Candle Sconce, 1912–1923
 copper and ceramic
 10 3/8 x 4 3/8 x 3 3/4 in.
 base
 engraved with monogram, "CS <in a box>"
 2021.045.001



Frank Lloyd Wright (1867–1959; American)
Dining Chair from the Heath House, 1904–1905
 wood and upholstery
 43 x 16 x 17 in.
 unmarked
 2015.0134



**John Mix & Richard H. Kern Stanley ((1814–1872; American)
 (1821–1853; American))**
*VIEW OF SANGRE DE CRISTO PASS (LOOKING NORTHEAST FROM
 CAMP NORTH OF SUMMIT, AUG. 11)*, 1855
 lithograph
 5 7/8 x 8 7/8 in.
 unsigned
 Printed in lower left corner "JM Stanley from a sketch by RH
 Kern"
 In lower right corner "Lith By A. Hoen & Co. Balti"
 2014.0178



Elsie Haddon Haynes (1881–1963 American, b. England)
PIKES PEAK, After 1921
 pastel on paper
 10 1/2 x 12 3/4 in.
 lower right corner
 Signed "E.H. Haynes".
 2011.0043



George Elbert Burr (1859–1939; American)
LONGS PEAK FROM NORTH DENVER, Probably 1907
 etching with aquatint
 6 3/4 x 9 3/4 in.
 bottom
 Signed "George Elbert Burr Del et Imp. No 65" across
 bottom in pencil.
 "GB" monogram in plate, lower left corner.
 2009.0803

Now On View in Arts & Crafts Gallery 3:



Adolf Dehn (1895–1968; American)
GARDEN OF THE GODS (Lake added by Dehn), 1949
lithograph
10 1/4 x 14 in.
lower right corner
In pencil "Adolf Dehn".
2008.1153



Lyman Byxbe (1886–1980; American)
TIMBERLINE STORM, c. 1941
drypoint
5 3/8 x 6 7/8 in.
lower right corner
Signed "Lyman Byxbe" in script.
2008.0683



Frank Lloyd Wright (1867–1959; American)
Floor Lamp from the Sherman Booth House, 1915
wood
65 x 10 1/8 x 14 in.
unmarked
2004.1951



Frank Lloyd Wright (1867–1959; American)
Dining Table, 1951
wood
28 x 48 x 36 in.
unmarked
2004.0521



Frank Lloyd Wright (1867–1959; American)
Dining Table, 1951
wood
28 1/8 x 48 x 36 in.
unmarked
2004.0520



Frank Lloyd Wright (1867–1959; American)
Dining Chair, 1951
wood
38 7/8 x 15 7/8 x 18 1/4 in.
unmarked
This chair is in the best condition.
2004.0509

Now On View in Art Nouveau Gallery 4:



Frank Sauerwein (1871–1910; American)

Untitled (Portrait of a Woman), 1896

watercolor on paper

12 1/2 x 9 1/4 in.

lower left corner

signed, "F.P. Sauerwen / 1896" (See notes for spelling)

2017.26.001



Elisabeth Spalding (1868–1954; American)

NEAR CHERRY CREEK, 1900

watercolor on paper

12 3/4 x 18 7/8 in.

lower right corner

Signed, "E. Spalding" in pencil

2016.85.002



Maud Leach (1870–1927; American)

Untitled (Landscape), date unknown

watercolor on paper

9 1/4 x 12 1/4 in.

lower left corner

Signed in paint "MAUD A. LEACH".

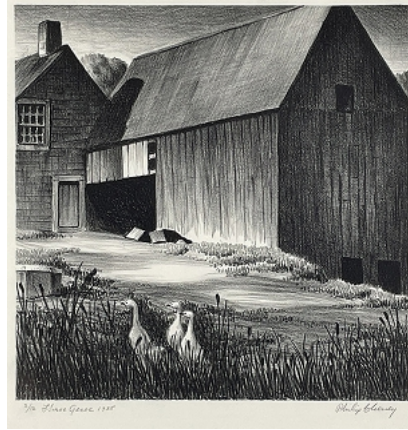
2011.0665

Now On View in Bauhaus Gallery 5:



Charles Ragland Bunnell (1897–1968; American)

AUTUMN FANTASY, 1936
watercolor and ink on paper
13 1/4 x 9 7/8 in.
lower left rear
signed, "Bunnell / 1936" in black
2022.086.001



Philip Cheney (1897–1992; American)

THREE GEESE, 1935 Ed. 3/12
lithograph
9 3/8 x 9 3/8 in.
lower right corner
signed along bottom, "3/12 Three Geese 1935 Philip Cheney" in
pencil
2022.057.003



Ken Goehring (1919–2007; American)

Untitled (Night in Old Colorado City, S.W. of Manitou), c.
1945–1950
oil on panel
18 1/4 x 23 1/2 in.
lower right corner
signed, "KEN GOEHRING" in black
2022.057.001



Peppino Mangravite (1896–1978; American, b. Italy)

SUMMER VACATION, 1938
lithograph
12 1/4 x 18 1/4 in.
unsigned
2021.094.011



Muriel Sibell Wolle (1898–1977; American)

Untitled (Chalk Cliffs, CO), 1960
litho crayon on paper
14 1/2 x 11 3/8 in.
lower right corner
signed, "SIBELL / WOLLE / 60" in black
2021.036.003



Lloyd Moylan (1893–1963; American)

PRETTY NECKLACE, c. 1945
watercolor on paper
14 1/8 x 20 5/8 in.
lower right corner
signed, "lloyd Moylan" in black
2020.036.002

Now On View in Bauhaus Gallery 5:



Arnold Rönnebeck (1885–1947; American, b. Germany)

LUJAN RANCH, 1929
 watercolor
 7 3/4 x 9 3/4 in.
 unsigned
 2013.0681



Eduardo Chavez (1917–1995; American)

Untitled (Woman Arranging Her Hair), 1955–1960
 oil on canvas
 22 x 33 in.
 lower right corner
 Signed "Chavez".
 2010.0617



Ethel Magafan (1916–1993; American)

THE BARRIER, 1964
 tempera on board
 40 x 50 in.
 lower left corner
 Signed "ETHEL MAGAFAN".
 "THE BARRIER 40 x 50 ETHEL MAGAFAN" on verso.
 2009.1027



Jenne Magafan (1916–1952; American)

SELF PORTRAIT (TO MOTHER), c. 1945
 oil on board
 11 1/2 x 9 1/2 in.
 bottom
 Signed "To Mother Jenne Magafan" in opposite bottom corners.
 2006.0804



Hutschenreuther Company (1814–present; Hohenberg, Bavaria)

PERSIA Plate, 1925–1941
 ceramic
 7/8 x 10 3/8 x 10 3/8 in.
 bottom
 Stamp "Persia / Copyright" "<Black Knight trademark with black knight against gold background> / Registered U.S.A. / Hohenberg Bavaria".
 2004.8837



Akro Agate Company (1911–1951; Clarksburg, WV)

PLAYTIME GLASS DISHES Teacup, 1935–1949
 glass
 1 1/4 x 2 1/2 x 2 in.
 bottom
 Raised symbol – likely the A with a bird over it – the logo for Akro Agate Company.
 2004.3652

Now On View in Bauhaus Gallery 5:



Akro Agate Company (1911–1951; Clarksburg, WV)
PLAYTIME GLASS DISHES Teacup, 1935–1949
glass
1 1/4 x 2 1/2 x 2 in.
unmarked
2004.3650



Akro Agate Company (1911–1951; Clarksburg, WV)
PLAYTIME GLASS DISHES Sugar Bowl, 1935–1949
glass
1 1/4 x 3 x 2 in.
bottom
Raised symbol – likely the A with a bird over it – the logo for Akro Agate Company.
2004.3649



Akro Agate Company (1911–1951; Clarksburg, WV)
PLAYTIME GLASS DISHES Creamer, 1935–1949
glass
1 1/4 x 3 x 2 in.
unmarked
2004.3648



Akro Agate Company (1911–1951; Clarksburg, WV)
PLAYTIME GLASS DISHES Teapot Lid, 1935–1949
glass
1 1/8 x 2 3/4 x 2 3/4 in.
unmarked
2004.3647b



Akro Agate Company (1911–1951; Clarksburg, WV)
PLAYTIME GLASS DISHES Teapot, 1935–1949
glass
2 3/4 x 3 5/8 x 2 1/4 in.
bottom
Raised symbol – likely the A with a bird over it – the logo for Akro Agate Company.
2004.3647a



Akro Agate Company (1911–1951; Clarksburg, WV)
PLAYTIME GLASS DISHES Saucer, 1935–1949
glass
3/8 x 2 3/4 x 2 3/4 in.
bottom
Raised symbol – likely the A with a bird over it – the logo for Akro Agate Company.
2004.3646

Now On View in Bauhaus Gallery 5:



Akro Agate Company (1911–1951; Clarksburg, WV)

PLAYTIME GLASS DISHES Saucer, 1935–1949

glass

3/8 x 2 3/4 x 2 3/4 in.

bottom

Raised symbol – likely the A with a bird over it – the logo for
Akro Agate Company.

2004.3645



Akro Agate Company (1911–1951; Clarksburg, WV)

PLAYTIME GLASS DISHES Plate, 1935–1949

glass

1/2 x 3 3/8 x 3 3/8 in.

unmarked

2004.3642



Akro Agate Company (1911–1951; Clarksburg, WV)

PLAYTIME GLASS DISHES Plate, 1935–1949

glass

1/2 x 3 3/8 x 3 3/8 in.

unmarked

2004.3641



Akro Agate Company (1911–1951; Clarksburg, WV)

PLAYTIME GLASS DISHES Plate, 1935–1949

glass

1/2 x 3 3/8 x 3 3/8 in.

unmarked

2004.3640



Akro Agate Company (1911–1951; Clarksburg, WV)

PLAYTIME GLASS DISHES Plate, 1935–1949

glass

1/2 x 3 3/8 x 3 3/8 in.

unmarked

2004.3639



Akro Agate Company (1911–1951; Clarksburg, WV)

PLAYTIME GLASS DISHES Box Lid, 1935–1949

cardboard

1 1/8 x 11 x 9 1/2 in.

unmarked

2004.3638a

Now On View in Bauhaus Gallery 5:



Ernestine Parsons (1884–1967; American)

Untitled (Abandoned "Evening Star" Mine near Cripple Creek, CO), c. 1940

oil on canvas board

12 3/8 x 10 1/2 in.

lower left corner

Signed "E PARSONS".

2004.2038



Eve Drewelowe (1899–1988; American)

RUN-AWAY RAILS, 1948

watercolor on paper

22 1/4 x 30 in.

lower center

Signed "Run-Away Rails Eve Drewelowe 1948".

"34/40P" in pen under signature.

2004.1012



Boardman Robinson (1876–1952; American)

READING HIS MOUTH, 1940

lithograph

12 x 15 in.

lower right corner

Signed "Boardman Robinson" in pencil.

2004.0981



Kathleen Huffman Vavra (1906–1984; American)

ALONG THE TRACK, 1936

watercolor on paper

19 1/4 x 26 1/4 in.

lower right corner

Signed "Kathleen Vavra".

2004.0528

Now On View in Art Deco Gallery 6:



Ruth L. & William Gerth ((1897–1952; American) (1892–1970; American))

FOUR-TUBE BUD HOLDER (No. 11230) Vase, 1933

metal

8 3/4 x 3 1/2 x 3 1/2 in.

bottom

engraved, "<Archer centaur logo> / CHASE / U.S.A."

2022.094.004



KEM (Karl Emanuel Martin) Weber (1889–1963; American, b. Germany)

Armchair, c. 1928

wood and upholstery

40 1/2 x 21 x 19 3/4 in.

unmarked

2022.079.001



Marjorie McClellan (1925–2018; American)

MOUNTAINS, 1948

lithograph

11 x 12 3/4 in.

lower right corner

signed, "Marjorie McClellan / '48", lower left reads, "Mountains" lower center reads, "10 prints" all in pencil

2018.93.002



Edward Marecak (1919–1993; American)

PACE PACE MIO DIO, c. 1940

gouache on paper

21 1/4 x 13 1/2 in.

lower right center

Signed "Edward Stephen Marecak".

2017.97.010



Frank Mechau (1904–1946; American)

ABSTRACTION, 1931

oil on canvas

38 x 48 1/8 in.

lower left

signed, "Mechau 31"

2017.72.002



Frank Lloyd Wright (1867–1959; American)

Midway Gardens Oval Plate, 1914

ceramic

1 x 7 x 4 1/2 in.

bottom

Stamped in red "New York – Chicago / Bausher / Weiden (Germany) / 19th"

Impressed "<oval shape, letters curved around it> RAUSCHER / WEIDEN" and "OO "

Now On View in Art Deco Gallery 6:



Indiana Glass Company (1907–present; Dunkirk, IN)
PYRAMID (No. 610) Cream & Sugar Tray, 1926–1932
glass
6 1/8 x 8 1/4 x 3 7/8 in.
unmarked
2013.0161



Indiana Glass Company (1907–present; Dunkirk, IN)
PYRAMID (No. 610) Creamer, 1926–1932
glass
4 1/4 x 5 x 3 1/2 in.
unmarked
2013.0159



Albert D. Mortrude (1910–1979; American)
KONGA COCKTAIL SHAKER Strainer, 1947
metal
7/8 x 2 1/2 x 2 1/2 in.
unmarked
2012.0371c



Albert D. Mortrude (1910–1979; American)
KONGA COCKTAIL SHAKER Lid, 1947
metal
2 x 3 3/8 x 3 3/8 in.
unmarked
2012.0371b



Albert D. Mortrude (1910–1979; American)
KONGA COCKTAIL SHAKER, 1947
metal and bakelite
10 3/4 x 5 3/4 x 3 3/8 in.
unmarked
2012.0371a



Harry Layton (1911–1997; American)
FESTIVITY (No. 09018) Tray, 1938
metal and bakelite
7/8 x 19 3/8 x 11 3/4 in.
unmarked
2012.0366

Now On View in Art Deco Gallery 6:



Chase Brass & Copper Company, Chase Specialties Division
 (1930–1942; Waterbury, CT & Chase Tower, NY)
KENT (No. 17089) Creamer, 1938
 metal and bakelite
 3 1/4 x 4 3/8 x 5 1/2 in.
 bottom
 Etched "<logo> / CHASE / U.S.A."
 2012.0365



Chase Brass & Copper Company, Chase Specialties Division
 (1930–1942; Waterbury, CT & Chase Tower, NY)
KENT (No. 17089) Sugar Bowl Lid, 1938
 plastic and metal
 1 7/8 x 3 1/8 x 3 1/8 in.
 unmarked
 2012.0364b



Chase Brass & Copper Company, Chase Specialties Division
 (1930–1942; Waterbury, CT & Chase Tower, NY)
KENT (No. 17089) Sugar Bowl, 1938
 metal
 3 x 3 1/2 x 3 1/2 in.
 blade
 Etched "<logo> / CHASE / <illegible>".
 2012.0364a



Walter von Nessen (1889–1943; American, b. Germany)
CORONET (No. 17088) Coffee Urn Lid, 1938
 metal and plastic
 2 x 5 x 5 in.
 unmarked
 2012.0363b



Walter von Nessen (1889–1943; American, b. Germany)
CORONET (No. 17088) Coffee Urn, 1938
 metal and bakelite
 10 3/8 x 10 1/2 x 10 1/4 in.
 bottom
 Raised "<around the circle> CHASE BRASS & COPPER CO / MODEL
 L 17088 VOLTS 110–120 A.C.–D.C. <inner circle> WATTS HUGH
 900 WATTS LOW 100 <logo in inner nest of circle>".
 2012.0363a



Paul Frankl (1886–1958; American, b. Austria)
MODERNIQUE Clock (Model 431B), 1928–1932
 metal and glass
 7 3/4 x 6 x 3 1/2 in.
 back
 Plaque "REG. U.S. TELECHRON PAT. OFF. / ELECTRIC CLOCK
 / MOD. 431B SER 393382B / <illegible> / WARREN
 TELECHRON CO. ASHLAND, MA USA".
 2010.0670

Now On View in Art Deco Gallery 6:



Kenneth R. Haley (1905–1987; American)

RUBA ROMBIC Fish Bowl, 1928

glass

8 x 14 1/2 x 14 1/2 in.

bottom

Molded raised lettering along bottom edge: "PATENTED SEPT 4.

1928 P.G.CO.".

2008.0521



Unknown

Ship at Sea Compact, c. 1925

sterling silver and enamel

2 1/2 x 2 1/2 x 5/8 in.

inside

"627, (illegible mark), registered, STERLING SILVER" marks inside bottom.

2006.0187



Ripley & Gowan Company (1874–1968; Attleboro, MA)

Lady with Hound Pendant Compact, c. 1925

acrylic and aluminum

2 1/2 x 3 1/8 x 1/2 in.

back

"R&C Co" (in heart), "La Mode" marks inside.

"STERLING" on rear.

Small piece of paper tucked inside: "Ripley & Gowan" hand-written



Paul Schreckengost (1908–1983; American)

Ladle, 1938–1939

ceramic

1 1/4 x 12 x 3 in.

unmarked

2004.3040



Frank L. Ferrell (1878–1961; American)

RUSSCO (No. 702) 12" Footed Urn, 1934

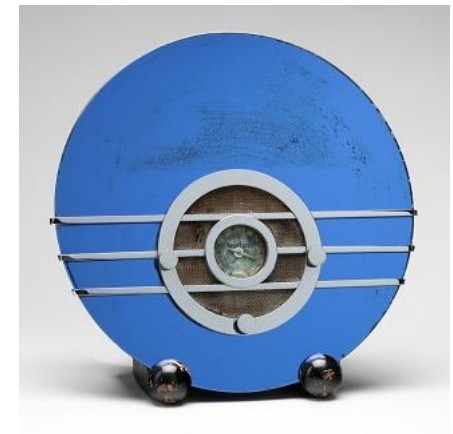
ceramic

12 1/4 x 7 3/4 x 7 1/2 in.

bottom

Black marker "Russco 1930s", red crayon "5", black marker "x", red marker "Plate 105".

2004.2869



Walter Dorwin Teague (1883–1960; American)

SPARTON BLUEBIRD Radio (Model 566), 1934

wood, glass and metal

14 3/4 x 14 5/8 x 6 in.

bottom

Stamped "Bluebird / Model 566".

2004.1850

Now On View in Art Deco Gallery 6:



Lurelle Van Arsdale Guild (1898–1985; American)
Art Deco Cocktail Cup, c. 1935
metal and plastic
3 1/4 x 3 x 3 in.
unmarked
2004.1330



Lurelle Van Arsdale Guild (1898–1985; American)
Art Deco Cocktail Cup, c. 1935
metal and plastic
3 1/4 x 3 x 3 in.
unmarked
2004.1329



Lurelle Van Arsdale Guild (1898–1985; American)
Art Deco Cocktail Cup, c. 1935
metal and plastic
3 1/4 x 3 x 3 in.
unmarked
2004.1328



Lurelle Van Arsdale Guild (1898–1985; American)
Art Deco Cocktail Cup, c. 1935
metal and plastic
3 1/4 x 3 x 3 in.
unmarked
2004.1327



Lurelle Van Arsdale Guild (1898–1985; American)
Art Deco Cocktail Cup, c. 1935
metal and plastic
3 1/4 x 3 x 3 in.
unmarked
2004.1326



Lurelle Van Arsdale Guild (1898–1985; American)
Art Deco Cocktail Cup, c. 1935
metal and plastic
3 1/4 x 3 x 3 in.
unmarked
2004.1325

Now On View in Art Deco Gallery 6:



Lurelle Van Arsdale Guild (1898–1985; American)
Art Deco Cocktail Cup, c. 1935
 metal and plastic
 3 1/4 x 3 x 3 in.
 unmarked
 2004.1324



Lurelle Van Arsdale Guild (1898–1985; American)
Art Deco Cocktail Cup, c. 1935
 metal and plastic
 3 1/4 x 3 x 3 in.
 unmarked
 2004.1323



Lurelle Van Arsdale Guild (1898–1985; American)
Art Deco Cocktail Server, c. 1935
 metal and plastic
 6 1/8 x 13 x 6 3/8 in.
 unmarked
 2004.1322



Indiana Glass Company (1907–present; Dunkirk, IN)
PYRAMID (No. 610) Sugar Bowl, 1926–1932
 glass
 4 1/8 x 5 3/4 x 3 5/8 in.
 unmarked
 2004.0916



Frank Lloyd Wright (1867–1959; American)
Midway Gardens Dessert Plate, 1914
 ceramic
 7/8 x 7 5/8 x 7 5/8 in.
 bottom
 "6T" impressed in bottom under glaze. Red stamp: "New York / Chicago . BAUSCHER / Weiden (Germany) / 1914".
 2004.0322



Frank L. Ferrell (1878–1961; American)
RUSSCO (No. 108) 7" Two-Handled Vase, 1934
 ceramic
 7 1/4 x 7 7/8 x 4 7/8 in.
 bottom
 "BL-B" inscribed in bottom.
 "108" written on bottom in red crayon.
 2001.0094

Now On View in Art Deco Gallery 6:



Viktor Schreckengost (1906–2008; American)
DANSE MODERNE JAZZ PLATE, 1931
ceramic
1 x 11 1/8 x 11 1/8 in.
unmarked
2001.0039



Vance Kirkland (1904–1981; American)
WODEN'S RING, 1945
watercolor and gouache on paper
22 x 30 3/4 in.
lower right corner
Signed "Vance Kirkland 1945".
VK1945.02



Paul Schreckengost (1908–1983; American)
Punch Cup, 1938–1939
ceramic
2 3/4 x 5 x 3 3/4 in.
unmarked
CG0722



Paul Schreckengost (1908–1983; American)
Punch Cup, 1938–1939
ceramic
2 3/4 x 5 x 3 3/4 in.
unmarked
CG0721



Paul Schreckengost (1908–1983; American)
Punch Cup, 1938–1939
ceramic
2 3/4 x 5 x 3 3/4 in.
unmarked
CG0720



Paul Schreckengost (1908–1983; American)
Punch Cup, 1938–1939
ceramic
2 3/4 x 5 x 3 3/4 in.
unmarked
CG0719

Now On View in Art Deco Gallery 6:



Paul Schreckengost (1908–1983; American)

Punch Bowl, 1938–1939

ceramic

4 1/2 x 12 x 12 in.

unmarked

CG0718

Now On View in Modern Gallery 7:



**Otto & Gertrud Natzler ((1908–2007; American, b. Austria)
(1908–1971; American, b. Austria))**

Demitasse Saucer, c. 1942

ceramic

bottom

signed, "natzler" in black

2022.090.002



**Otto & Gertrud Natzler ((1908–2007; American, b. Austria)
(1908–1971; American, b. Austria))**

Demitasse Cup, c. 1942

ceramic

2 1/4 x 3 3/8 x 2 3/4 in.

bottom

signed, "n." in black

2022.090.001

Now On View in Postmodern Gallery 8:



Rex Ray (1956–2015; American)

Rug, 2000s

wool

125 1/2 x 97 in.

underside

label on underside of rug reads, "R2 / Rex Ray <signature> /

REX RAY for SAMAD / www.samad.com"

2021.051.001



Silas Seandel (b. 1937; American)

Brutalist Style Side Table, 1960s

metal and glass

20 x 24 3/4 x 24 in.

unmarked

2019.080.001



Vladimir Kagan (1927–2016; American, b. Germany)

SNAIL Coffee Table, 1950s

wood

14 1/4 x 25 3/4 x 24 in.

unmarked

2016.03.012a



JVC (Victor Company of Japan) (1927–present; Yokohama, Japan)

VIDEOSPHERE (Space Helmet TV) (Model 3240 GM), 1970

plastic

10 1/4 x 10 1/4 x 10 1/4 in.

rear

Black sticker, "Model #3240GM /

Serial No. 1230157".

2004 00002

Now On View in the Elevator Foyer:



Henry Lowenstein (1925–2014; American, b. Germany)

CAMELOT (THRONE ROOM) Set Design Maquette, 1969

watercolor on paper

11 1/2 x 36 in.

lower right corner

In blue marker "Lowenstein '69".

2009.0086



Henry Lowenstein (1925–2014; American, b. Germany)

CAMELOT (BATTLEFIELD) Set Design Maquette, 1969

watercolor on paper

15 x 40 in.

unsigned

2009.0073

Now On View in Sculpture Gallery 10:



Myron Melnick (b. 1953; American)

METROPOLIS, 2001

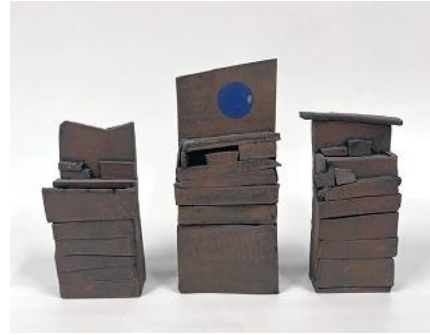
cast, burnished paper

34 x 10 3/4 x 20 in.

back, center

"Metropolis / 2001 <copyright symbol> / MELNICK"

2021.092.002



Mark Freeman (b. 1964; American)

ALTARS TO THE BLUE MOON, Triptych, 2018

ceramic

11 1/8 x 2 1/4 in.

bottom

see part records

2021.081.001

Now On View in the Watercolor Room:



Vance Kirkland (1904–1981; American)
ABSTRACTION FROM TIMBERLINE (Timberline Abstraction Series), 1953
watercolor, gouache and denatured alcohol on paper
29 x 21 3/4 in.
lower right corner
Signed "Kirkland 1953".
VK1953.05



Vance Kirkland (1904–1981; American)
FANTASY, 1948
watercolor and gouache on paper
22 1/4 x 30 3/4 x 2 1/4 in.
lower right corner
Signed "Vance Kirkland 1948".
VK1948.04



Vance Kirkland (1904–1981; American)
MOUNTAIN FLOWERS, 1948
watercolor, casein tempera and gouache on paper
22 1/2 x 29 3/4 in.
lower right corner
Signed "Vance Kirkland 1948".
VK1948.02



Vance Kirkland (1904–1981; American)
PRIMORDIAL FANTASY, 1947
casein tempera, watercolor and gouache on paper
30 3/4 x 41 3/4 in.
lower right center
Signed "Vance Kirkland 1947".
VK1947.28



Vance Kirkland (1904–1981; American)
ROCKY MOUNTAIN ABSTRACTION, 1947
gouache on paper
22 1/2 x 31 x 1 1/2 in.
unsigned
VK1947.27



Vance Kirkland (1904–1981; American)
Colorado Landscape Fantasy (aka The Ghost), 1946
watercolor on paper
22 1/4 x 31 in.
lower right corner
Signed "Vance Kirkland 1946".
VK1946.18

Now On View in the Watercolor Room:



Vance Kirkland (1904–1981; American)
RIDERS IN THE GARDEN OF THE GODS, 1944
watercolor on paper
22 x 30 in.
lower left corner
Signed "Vance Kirkland".
VK1944.16



Vance Kirkland (1904–1981; American)
MOONLIGHT—ISLE OF THE DEAD (Colorado), 1943
watercolor on paper
26 1/2 x 26 1/2 in.
lower left center
Signed "Kirkland".
VK1943.11



Vance Kirkland (1904–1981; American)
SNOWY OWL (demonstration for his students), 1943
watercolor on paper
22 1/2 x 31 x 1 1/2 in.
lower right corner
Signed "Kirkland 1943".
VK1943.01



Vance Kirkland (1904–1981; American)
NEAR MORRISON, 1942
watercolor on paper
22 1/4 x 30 in.
lower right
Signed "Vance Kirkland 1942".
VK1942.03a



Vance Kirkland (1904–1981; American)
THE CANYON NEAR CENTRAL CITY, 1940
watercolor on paper
22 1/2 x 30 in.
lower right corner
Signed "Vance Kirkland 1940".
VK1940.20



Vance Kirkland (1904–1981; American)
RUINS, CENTRAL CITY, 1940
watercolor on paper
22 x 30 in.
lower right corner
Signed "Vance Kirkland / 1940".
VK1940.05

Now On View in the Watercolor Room:



Vance Kirkland (1904–1981; American)
BRICK FACTORY (West of Denver), 1937
watercolor on paper
18 3/4 x 24 3/4 x 2 in.
lower left corner
Signed "Vance Kirkland 1937."
VK1937.07



Vance Kirkland (1904–1981; American)
CENTRAL CITY OPERA HOUSE, 1933
watercolor on paper
25 x 19 in.
lower center
Signed "Vance Kirkland 1933".
VK1933.01



Vance Kirkland (1904–1981; American)
MOUNTAIN RUINS, 1931
watercolor on paper
14 1/2 x 19 1/2 in.
lower left center
Signed "Kirkland 1931".
VK1931.13



Vance Kirkland (1904–1981; American)
TOLEDO, SPAIN (Bridge and Castle), 1930
watercolor on paper
15 1/4 x 19 1/2 in.
lower right corner
Signed "TOLEDO, SPAIN VANCE H. KIRKLAND 1930".
VK1930.21



Vance Kirkland (1904–1981; American)
GRAND CANYON, 1928
watercolor on paper
15 x 20 in.
lower left corner
Signed "Vance H. Kirkland 1928."
VK1928.02



Vance Kirkland (1904–1981; American)
WATERFALL, ELYRIA (Ohio), 1927
watercolor on paper
14 3/4 x 20 in.
lower right center
Signed "Vance H. Kirkland '27."
VK1927.09

Now On View in the Watercolor Room:



Vance Kirkland (1904–1981; American)

TROUT STREAM, 1931 Ed. 28/40

lithograph

8 3/4 x 11 7/8 in.

bottom

Signed "Trout Stream 28/40 Vance Kirkland 1931" across

bottom in pencil.

P10.04



Vance Kirkland (1904–1981; American)

COLORADO LANDSCAPE, TRUESDALE RANCH, 1935

litho crayon on paper

17 3/4 x 23 in.

lower left corner

Signed "Vance Kirkland 1935".

P06.03



Vance Kirkland (1904–1981; American)

ANIMAL, ROOT AND PLANT FORMS TEN MILLION YEARS

AGO, 1945

ink on paper

13 3/4 x 16 3/4 in.

lower right corner

Signed "Kirkland 1945".

P01.36



Vance Kirkland (1904–1981; American)

ROOT FORMS, 1945

litho crayon on paper

12 1/4 x 16 1/2 in.

lower left corner

Signed "Kirkland 1945".

P01.02

Now On View in the Visitor Lounge:



Mary Mackey (b. 1959; American)

HORIZONTAL TANGO I, 2003

monoprint

15 x 15 1/4 in.

lower right corner

Signed "Mary Mackey 03", lower left corner "Horizontal Tango I".

2012.0621