

## Now On View Promenade Gallery 2:



**Frank Lloyd Wright (1867–1959; American)**

*PEACOCK CHAIR*, 1921

wood and upholstery

37 7/8 x 15 1/2 x 20 in.

back

Metal plaque on back of chair reads, "177"

CG0521



**Frank Lloyd Wright (1867–1959; American)**

*PRICE TOWER Stenographer Chair*, 1956

metal and upholstery

32 x 19 x 21 in.

unmarked

2011.0149

**Now On View Arts & Crafts Gallery 3:**



**Otto Heintz (1876–1918; American)**

*Ashtray Nesting Set*, 1912

bronze and sterling silver

1 x 3 3/4 x 3 3/4 in.

bottom

impressed, "5570 / AHMS < in a diamond > / STERLING / ON BRONZE /

PAT AUG 27.12"

2023.007.002a



**Otto Heintz (1876–1918; American)**

*Ashtray Nesting Set*, 1912

bronze and sterling silver

1 1/8 x 3 3/4 x 3 3/4 in.

bottom

see part records for details

2023.007.002



**Dugan Glass Company (1904–1909; Indiana, PA)**

*Red Frit Four Pinched Vase*, 1904–1912

glass

5 7/8 x 5 x 5 in.

unmarked

2023.001.007



**Dugan Glass Company (1904–1909; Indiana, PA)**

*Cobalt Spatter Starburst Double Pinch Vase*, c. 1906

glass

6 3/8 x 3 3/4 x 3 1/4 in.

unmarked

2023.001.006



**Dugan Glass Company (1904–1909; Indiana, PA)**

*Clambroth Iridised Pinched Vase*, c. 1906

glass

10 x 5 x 5 in.

unmarked

2023.001.005



**Dugan Glass Company (1904–1909; Indiana, PA)**

*Green Frit Honeycomb Rose Bowl*, c. 1909–1911

glass

3 3/4 x 4 1/4 x 4 1/4 in.

unmarked

2023.001.004

### Now On View Arts & Crafts Gallery 3:



**Dugan Glass Company (1904–1909; Indiana, PA)**

*Green Frit Honeycomb Spittoon, c. 1909–1911*

glass

2 5/8 x 4 3/4 x 4 3/4 in.

unmarked

2023.001.003



**Dugan Glass Company (1904–1909; Indiana, PA)**

*Peach opal Iridised Hyacinth Vase, c. 1909*

glass

7 3/4 x 3 1/2 x 3 1/2 in.

unmarked

2023.001.002



**Dugan Glass Company (1904–1909; Indiana, PA)**

*Clambroth Firt Iridised Ribbed Optic Vase, 1904–1909*

glass

10 5/8 x 5 1/2 x 5 in.

unmarked

2023.001.001

## Now On View Art Nouveau Gallery 4:



**Hugo Leven (1874–1956; German)**

*KAYSERZINN (No. 4427) Candlestick, c. 1900*

pewter

16 x 6 x 6 in.

bottom

marked, "KAYSERZINN / 4427" in an oval.

2023.017.001

## Now On View Art Deco Gallery 6:



**René Lalique (1860–1945; French)**  
*COQUILLES (No. 3204) Fruit Bowl, 1924*  
glass  
2 x 5 1/8 x 5 1/8 in.  
bottom  
inscribed, "R. LALIQUE / FRANCE / No. 3204"  
2023.007.001



**Paul Frankl (1886–1958; American, b. Austria)**  
*ROND Vanity Box, c. 1929*  
plastic  
2 3/4 x 5 1/4 x 5 1/4 in.  
bottom  
impressed, "ROND <logo> AMERITH"  
2022.079.004



**Ruth L. & William Gerth ((1897–1952; American) (1892–1970; American))**  
*Disc Candleholders (No. 24005), 1934*  
chrome plated brass  
4 3/4 x 8 1/2 x 4 in.  
bottom  
bottom of bobeches, "<centaur logo> / CHASE / U.S.A."  
2020.026.002



**Lurelle Van Arsdale Guild (1898–1985; American)**  
*Electrolux Vacuum Cleaner (Model 30), 1937*  
metal  
8 1/2 x 23 x 7 3/4 in.  
2004.3466

**Now On View Modern Gallery 7:**



**Richard Anuszkiewicz (1930–2020; American)**

*Enamel Bowl, 1976*

metal

5 1/4 x 8 3/8 x 8 3/8 in.

bottom

signed, "ANUSZKIEWICZ / HIRSHHORN MUSEUM / AND SCULPTURE  
GARDEN / SMITHSONIAN INSTITUTION / WASHINGTON, D.C."

2023.017.005



**Gio Ponti (1891–1979; Italian)**

*QUATTRO STAGIONE (No. 1735) (INVERNO), c. 1930*

glazed ceramic

7 3/4 x 6 x 6 in.

bottom

"<design> Richard / Ginori / MANIFATTURA / DI DOCCIA / <script>  
Florence < end script> / ITALY"

2020.043.004



**Gio Ponti (1891–1979; Italian)**

*QUATTRO STAGIONE (No. 1735) (AUTUNNO), c. 1930*

glazed ceramic

7 3/4 x 6 x 6 in.

bottom

"<design> Richard / Ginori / MANIFATTURA / DI DOCCIA / <script>  
Florence < end script> / ITALY"

2020.043.003



**Gio Ponti (1891–1979; Italian)**

*QUATTRO STAGIONE (No. 1735) (ESTATE), c. 1930*

glazed ceramic

7 3/4 x 6 x 6 in.

bottom

"<design> Richard / Ginori / MANIFATTURA / DI DOCCIA / <script>  
Florence < end script> / ITALY"

2020.043.002



**Gio Ponti (1891–1979; Italian)**

*QUATTRO STAGIONE (No. 1735) (PRIMAVERA), c. 1930*

glazed ceramic

7 3/4 x 6 x 6 in.

bottom

"<design> Richard / Ginori / MANIFATTURA / DI DOCCIA / <script>  
Florence < end script> / ITALY"

2020.043.001

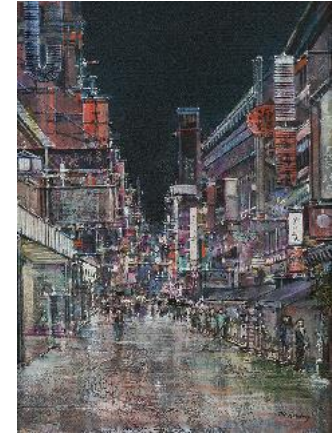
## Now On View Visitor lounge Gallery 18:



**Pawel (Paul) Kontny (1923–2002; Silesian (German–Polish))**  
*Untitled (Sonoran Indian Boy)*, late 1960s  
pastel on paper  
16 1/2 x 12 1/2 in.  
lower right corner  
signed, "P.A. Kontny" in black  
2022.037.001



**Pawel (Paul) Kontny (1923–2002; Silesian (German–Polish))**  
*Untitled (Abstraction)*, 1980s  
watercolor and pastel on paper  
19 x 15 in.  
lower left corner  
signed, "Kontny"  
2020.085.001



**Pawel (Paul) Kontny (1923–2002; Silesian (German–Polish))**  
*OSAKA*, 1990–1995  
marble dust and oil glazes on board  
13 7/8 x 10 in.  
lower right corner  
signed, "P.A. Kontny" in black  
2019.058.004



**Pawel (Paul) Kontny (1923–2002; Silesian (German–Polish))**  
*HUNGARIAN GYPSY QUEEN*, c. 1989  
pastel on paper  
23 1/2 x 19 1/2 in.  
lower left  
signed, "P.A. Kontny" in white  
2019.031.003

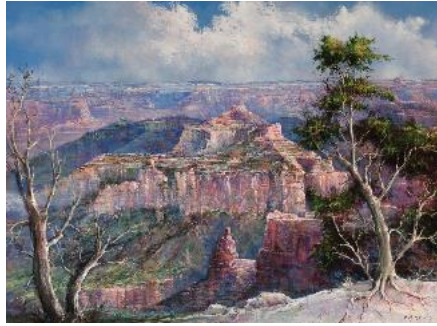


**Pawel (Paul) Kontny (1923–2002; Silesian (German–Polish))**  
*CHROMOSOME TREE*, c. 1985  
marble dust and oil glazes on board  
33 1/2 x 6 3/8 in.  
lower left corner  
signed, "P.A. Kontny" in white  
2018.50.002



**Pawel (Paul) Kontny (1923–2002; Silesian (German–Polish))**  
*Untitled (Colorado Mining Town)*, 1964  
pastel on paper  
8 1/8 x 20 1/4 in.  
lower right corner  
Signed "Kontny 1964"  
2014.0088

## Now On View Visitor lounge Gallery 18:



**Pawel (Paul) Kontny (1923–2002; Silesian (German–Polish))**

*Untitled (Grand Canyon)*, 1980s–1990s

marble dust and oil glazes on board

29 1/4 x 39 1/4 in.

lower right corner

Signed in black paint "P. A. Kontny"

2014.0030



**Pawel (Paul) Kontny (1923–2002; Silesian (German–Polish))**

*BEETHOVEN*, c. 1972

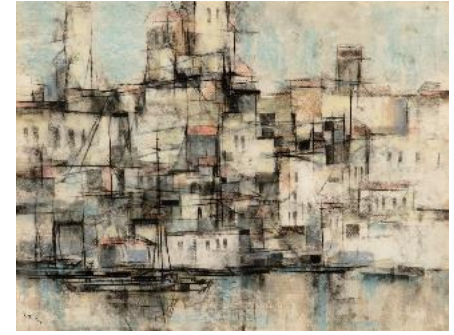
Conté crayon on paper

16 1/2 x 13 3/4 in.

lower right corner

Signed "P.A. Kontny".

2010.0956



**Pawel (Paul) Kontny (1923–2002; Silesian (German–Polish))**

*DREAM CITY (Yugoslavia on the Adriatic Sea)*, 1967

pastel and charcoal on paper

16 5/8 x 21 3/4 in.

lower left corner

Signed in charcoal "Kontny".

2010.0010