

New On View Kirkland Gallery I



Vance Kirkland (1904–1981; American)
LANDSCAPE WITH ROCKS (Ohio), 1927
watercolor on paper
15 x 20 in.
lower left corner
Signed "Vance H. Kirkland '27."
VK1927.08



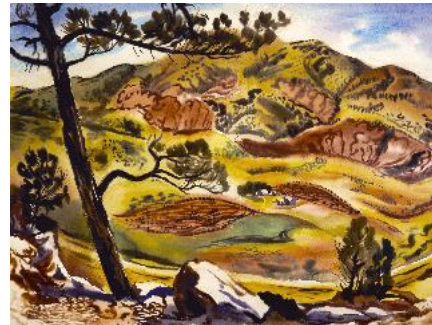
Vance Kirkland (1904–1981; American)
CACTUS, 1933
watercolor on paper
24 3/4 x 18 1/2 in.
lower right corner
Signed "Vance Kirkland 1933."
VK1933.03



Vance Kirkland (1904–1981; American)
NEWPORT, 1939
watercolor on paper
22 1/2 x 30 in.
lower right center
Signed "Vance Kirkland 1939".
VK1939.04



Vance Kirkland (1904–1981; American)
THE ENERGY OF EXPLOSIONS OF THE SUN SIXTY BILLION YEARS B.C.,
1978
oil paint & water with gold on linen
75 x 100 in.
lower right corner
Signed "Kirkland 1978 (10)".
VK1978.10



Vance Kirkland (1904–1981; American)
COLORADO LANDSCAPE, 1938
watercolor on paper
22 1/2 x 30 x 2 in.
lower right corner
Signed "Vance Kirkland / 1938".
VK1938.12



Vance Kirkland (1904–1981; American)
RED ON BLUE (Valhalla Series), 1965
oil paint & water on linen
34 x 30 in.
lower right
Signed "Kirkland 1965 (6)".
VK1965.06

New On View Kirkland Gallery I



Eero Saarinen (1910–1961; American, b. Finland)

Pedestal Ashtray with Metal Screen, 1962–1976

metal

20 1/4 x 12 3/4 x 12 3/4 in.

bottom of top

Sticker "KNOLL <logo> KNOLL ASSOCIATES INC. / 320 PARK AVENUE

NEW YORK / <logo with 2 red triangles".

2010.0755a

New On View Promenade Gallery 2



Warren McArthur (1885–1961; American)

Tubular Aluminum Smoking Stand (No. 1554), c. 1935

metal and wood

25 1/4 x 9 1/2 x 9 1/2 in.

bottom

Original Formica Co. decals (red with black type) on bottom of both disks. Green decal on underside of top disk heavily worn and illegible.

2004.0048a

New On View Arts & Crafts Gallery 3



W.T. Copeland & Sons (c. 1770–present; London, England)

Aesthetic Period Plate, 1879

ceramic

5/8 x 9 1/8 x 9 1/8 in.

bottom

Impressed "COPELAND / B" and "L / 79".

2004.1829



Royal Worcester (1751–2009; England)

Aesthetic Period Bowl, 1868

ceramic

1 5/8 x 10 x 10 in.

bottom

Impressed , <Crown above a circle with stylized WC that looks like a clover>

and "B"

2004.1830



Elsie Haddon Haynes (1881–1963 American, b. England)

NEAR DENVER, c. 1930

pastel on paper

10 1/4 x 14 1/4 in.

lower left corner

Signed "E H Haynes".

2009.0608



John Mix & Richard H. Kern Stanley ((1814–1872; American) (1821–1853; American))

VIEW OF SANGRE DE CRISTO PASS (LOOKING NORTHEAST FROM CAMP NORTH OF SUMMIT, AUG. 11), 1855

lithograph

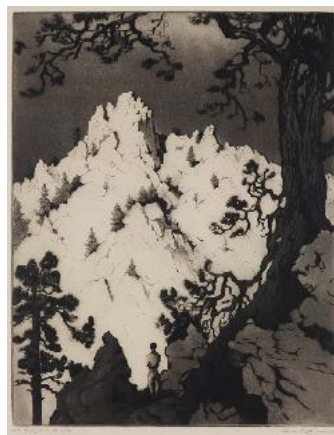
5 7/8 x 8 7/8 in.

unsigned

Printed in lower left corner "JM Stanley from a sketch by RH Kern"

In lower right corner "Lith By A. Hoen & Co. Balti"

2014.0178



Gene Kloss (1903–1996; American)

LATE SUNLIGHT ON THE CLIFFS, 1941 /75

etching with aquatint

13 1/2 x 10 3/4 in.

lower right corner

signed, "Gene Kloss" in pencil. Lower left, "Late Sunlight on The Cliffs"

2016.25.004



Lemuel M. Wiles (1826–1905; American)

CLEAR CREEK CANYON, ROCKY MOUNTAINS, 1876

oil on board

12 3/4 x 9 7/8 in.

lower right corner

signed, "LM WILES / 1876"

2017.26.003

New On View Arts & Crafts Gallery 3



William De Morgan (1839–1917; English)

Tile, c. 1869–1882
ceramic
3/8 x 6 x 6 in.
unmarked
2020.045.011



William De Morgan (1839–1917; English)

Plate, c. 1869–1882
ceramic
5/8 x 8 1/2 x 8 1/2 in.
bottom
impressed, "P" and "68"
2020.045.012



Unknown

Vase, 1882–1891
ceramic
11 1/2 x 5 1/2 x 5 1/2 in.
unmarked
2020.045.014



Burmantofts Faience (1845–1957; Leeds, Yorkshire, England)

(No. 1579) Vase, c. 1882–1891
ceramic
8 x 4 x 4 in.
bottom
black stamp, "BF <stylized> / 1579"
2020.045.015



Burmantofts Faience (1845–1957; Leeds, Yorkshire, England)

(No. 531) Vase, 1882–1891
ceramic
7 3/4 x 3 1/2 x 3 1/2 in.
bottom
black stamp, "BF <stylized> / illegible / 531"
2020.045.016



Gerbing & Stephan (1861–1903; Bodenbach, Bohemia)

(No. 3912) Pitcher, c. 1885
ceramic
10 3/4 x 5 1/4 x 5 in.
bottom
impressed, "G. & St. / 3912 / 8 / <line circle line>" and "<circle with a diagonal line through it>" in handwritten black ink.
2020.045.017

New On View Arts & Crafts Gallery 3



Christopher Dresser (1834–1904; Scottish–English)

Pitcher (No. 183), 1879–1882

ceramic

5 3/4 x 4 x 4 3/4 in.

bottom

impresed, "LINTHORPE / Chr. Dresser <facsimile signature> / 183 HT"

2020.045.018



Royal Worcester (1751–2009; England)

Spill Vase, c. 1880–1885

ceramic

6 x 5 x 5 in.

bottom

impresed, "591" possibly? it is hard to read.

2020.045.019



Harriet Freeman Wright (1852–1926; American)

PIKES PEAK, COLORADO

oil on canvas

28 x 39 3/4 in.

lower right corner

signed, "H F WRIGHT"

2020.061.001



E. F. Bodley & Co (1862–1881) (Burslem, Staffordshire, England)

JAPANESE Luncheon Plate, 1862–1881

ceramic

1 x 9 1/8 x 9 1/8 in.

bottom

red mark, "JAPANESE / E.F.B." lighter red, "3863"

2020.066.001



E. J. D. Bodley (1875–1892; Burslem, Staffordshire, England)

THORN Teapot, 1882

ceramic

4 3/4 x 8 1/2 x 5 1/4 in.

bottom

see part records

2020.087.001



William De Morgan (1839–1917; English)

Tile, c. 1869–1882

ceramic

6 x 6 in.

unsigned

2021.004.001

New On View Arts & Crafts Gallery 3



William De Morgan (1839–1917; English)
Charger, c. 1869–1882
ceramic
3/4 x 11 3/4 x 11 3/4 in.
bottom
impressed, "<illegible> DAVIS / H"
2021.004.003



Christopher Dresser (1834–1904; Scottish–English)
PROPELLER Vase, c. 1892–1894
ceramic
8 1/8 x 4 3/8 x 4 3/8 in.
bottom
facsimile signature "Ch. Dresser"
2021.093.001



Christopher Dresser (1834–1904; Scottish–English)
Plate with HARE'S FUR Glaze, 1879–1882
ceramic
1 1/2 x 8 x 8 in.
bottom
"LINTHORPE / <Trademark symbol> / Ch. Dresser / <underline
mark>"
2021.093.002



Lyman Byxbe (1886–1980; American)
GRAND LAKE, c. 1940
drypoint and aquatint
5 3/8 x 6 7/8 in.
lower right corner
signed along bottom, "Grand Lake Lyman Byxbe" in pencil
2023.012.002

New On View Art Nouveau Gallery 4



Elisabeth Spalding (1868–1954; American)
LONESOME TRAIL, 1924
watercolor on paper
17 x 14 in.
lower right corner
Signed "Elisabeth Spalding May 1924".
1981.0002



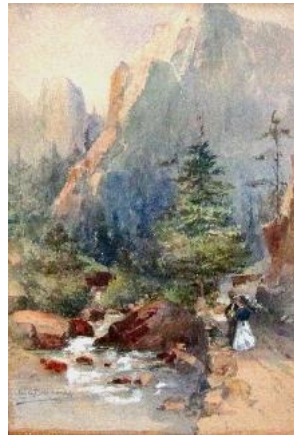
William Henry Bancroft (1860–1932; American, b. England)
Untitled (Landscape), Probably 1910s
oil on canvas
18 x 24 in.
lower left corner
Signed "W. H. BANCROFT".
2009.0940



Robert Alexander Graham (1873–1946; American)
NEAR MT. MORRISON (Colorado), 1935
oil on canvas board
17 7/8 x 24 in.
lower right corner
Signed "Robt. A. Graham".
2010.0616



Alexander Phimister Proctor (1860–1950; American, b. Canada)
BIG HORN MOUNTAIN SHEEP, c. 1909
watercolor on paper
12 1/2 x 15 1/4 in.
lower right
Initialed "A.P.P."
2011.0436



Oscar E. Berninghaus (1874–1952; American)
Untitled (Royal Gorge, Colorado), 1898
watercolor on paper
12 1/4 x 8 1/2 in.
lower left corner
Signed in blue "O.L. Berninghas / 98". (This is how the signature looks, not a typo)
2011.0907



Alexis Comperet (Compera) (1856–1906; American)
Untitled, c. 1890s
oil on canvas board
12 x 16 in.
lower right corner
Signed "Compera".
2011.0933

New On View Art Nouveau Gallery 4



Josef Hoffmann (1870–1956; Austrian, b. Moravia)

Table, 1907

wood

30 1/2 x 23 5/8 x 23 5/8 in.

bottom

stamped, "KAMERADSCHAFT / DER BUNDESBAHNBFDIENSTETEN" in black.

2015.0910a



Frederick Clement Trucksess (1895–1997; American)

Untitled (Landscape with Stream), 1920

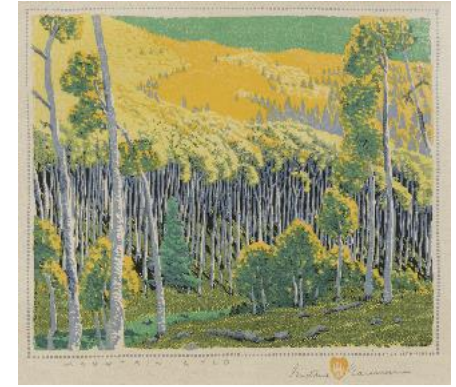
oil on canvas

14 5/8 x 18 1/4 in.

lower right corner

signed, "C. Trucksess 1920" barely legible very faded.

2017.09.001



Gustave Baumann (1881–1971; American, b. Germany)

MOUNTAIN GOLD, 1926/1946 Ed. 111/125

woodcut

9 1/2 x 11 1/8 in.

lower right corner

signed, "Gustave <open hand stamp> Baumann" lower left reads,
"MOUNTAIN GOLD" all in pencil. Within print border "111 125 -46"

2018.81.001

New On View Bauhaus Gallery 5



Frank Mechau (1904–1946; American)

WILD HORSES, 1936

lithograph

6 1/4 x 13 7/8 in.

unsigned

Stamped on verso: "American Artists Group 106 Seventh Avenue New York / WILD HORSES by FRANK MECHAU, JR. FM(c)1936".

2009.0646



James Duard Marshall (1914–2010; American)

Untitled (Reds' Coup), 1947

oil on burlap

18 x 24 in.

lower right corner

Signed " '47 MARSHALL".

2009.0799



Morgan Wagner (1917–1950; American)

YAMPA RANCHER, 1946

oil on board

13 7/8 x 11 in.

upper left corner

Signed in paint "Morgan '46 / Wagner".

2012.0675



Muriel Sibell Wolle (1898–1977; American)

Untitled (Mining Ghost Town), 1954

watercolor on paper

11 1/2 x 15 in.

lower right corner

signed, "SIBELL / WOLLE / '54"

2016.29.008



Adolf Dehn (1895–1968; American)

COLORADO COAL MINE, JUNE, 1940

watercolor on paper

14 1/8 x 20 5/8 in.

lower right corner

signed, "Adolf Dehn 40"

2016.97.001



herbert bayer (1900–1985; American, b. Austria)

fluttering wings (mexico), 1945 /34

serigraph

9 x 11 3/4 in.

lower right corner

signed, "bayer / 45" in the plate, lower left, "34 impr" in pencil and below the frame, "fluttering wings' mexico" (see notes)

2017.42.003

New On View Bauhaus Gallery 5



herbert bayer (1900–1985; American, b. Austria)
homage to a green moon, 1962
 acrylic on canvas
 32 x 20 in.
 lower right corner
 signed, "bayer 62/47"
 2017.72.015



Werner Drewes (1899–1985; American, b. Germany)
Untitled (A 11, Abstract), 1929
 watercolor on paper
 6 3/4 x 7 1/4 in.
 lower left corner
 signed, "Drewes / 2 <peace sign> 9" in pencil. In margin below, "A 11" in a rectangle.
 2018.77.001



Charles Ragland Bunnell (1897–1968; American)
LATE EVENING KANSAS CITY, MO., 1935 Ed. 12/18
 lithograph
 9 7/8 x 9 3/4 in.
 lower right corner
 signed along bottom, "Late Evening Kansas City, Mo. 12/18 Bunnell, 1935" in pencil
 2020.113.001



Werner Drewes (1899–1985; American, b. Germany)
SELF PORTRAIT, 1938
 etching
 7 3/4 x 2 3/8 in.
 lower right corner
 signed, "Drewes 38" in pencil
 2022.017.001



Arnold Rönnebeck (1885–1947; American, b. Germany)
TAOS MORADA, 1930 Ed. 7/50
 lithograph
 8 1/2 x 11 3/4 in.
 lower right
 signed along bottom, "Taos Morada #7/50 Arnold Ronnebeck 1930"
 2022.059.012



herbert bayer (1900–1985; American, b. Austria)
mirage, 1949
 oil on linen
 32 x 42 in.
 lower right corner
 Signed "Bayer 49" and "1949" upside-down in upper left corner.
 CG0010

New On View Bauhaus Gallery 5



Werner Drewes (1899–1985; American, b. Germany)

ACTION AND REPOSE, 1940 Ed. 1/20

drypoint

7 5/8 x 9 5/8 in.

lower right corner

Signed "Drewes - 40 -" in pencil.

CG0038

New On View Postmodern Gallery 8



Dale Chisman (1943–2008; American)

LIONEL (Relating to Vibraphonist Lionel Hampton), 1996

monotype

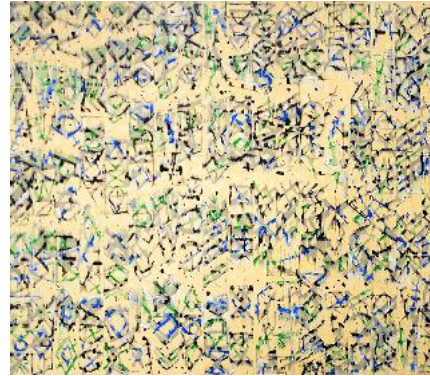
21 3/4 x 13 1/2 in.

lower right corner

Signed "Chisman 6<dot>96"

Lower left corner "1/1 Lionel"

2014.0438



Roland Bernier (1932–2015; American)

BLACK, GREEN, AND BLUE (Graffiti Series), 1990

mixed media

62 x 72 in.

lower right corner

signed "Bernier 1990"

2016.08.002

New On View Watercolor Room



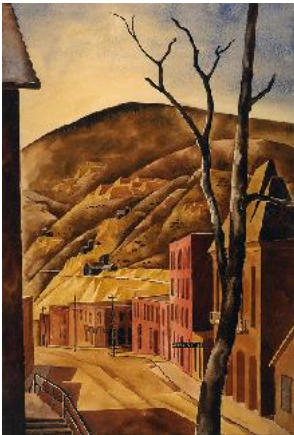
Vance Kirkland (1904–1981; American)
EXPERIMENT WITH PAINT (Glass Series), 1954
oil paint & water on panel
31 x 22 1/2 in.
lower right corner
Signed "Kirkland 1954".
VK1954.03



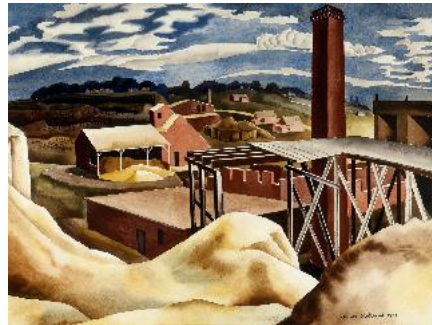
Vance Kirkland (1904–1981; American)
DEADWOOD FORMS, 1945
litho crayon on paper
11 1/2 x 17 5/8 in.
lower right corner
Signed "Kirkland 1945".
P01.60



Vance Kirkland (1904–1981; American)
CAPRI, 1930
watercolor on paper
14 1/2 x 19 1/2 in.
lower right corner
Signed "Capri 1930 Vance Kirkland".
VK1930.07



Vance Kirkland (1904–1981; American)
CENTRAL CITY, ASSAY OFFICE, 1934
watercolor on paper
28 1/2 x 19 1/2 in.
lower center
Signed "Vance Kirkland 1934".
VK1934.03



Vance Kirkland (1904–1981; American)
OUT WEST OF DENVER, 1937
watercolor on paper
18 1/4 x 24 1/4 x 1 in.
lower right corner
Signed "Vance Kirkland 1937".
VK1937.04



Vance Kirkland (1904–1981; American)
LANDSCAPE NIGHT, 1940
watercolor on paper
22 1/2 x 30 x 1 1/8 in.
lower left corner
European Tour
VK1940.04

New On View Watercolor Room



Vance Kirkland (1904–1981; American)
CLOUDS AND MOUNTAINS, 1941
watercolor on paper
22 x 30 1/2 in.
unsigned
See Note.
VK1941.22



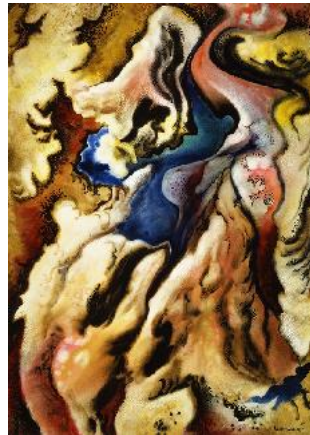
Vance Kirkland (1904–1981; American)
RED WOOD, 1944
watercolor and gouache on paper
23 x 31 x 1 1/8 in.
lower right corner
Signed "Vance Kirkland". "1944" in pencil.
VK1944.04



Vance Kirkland (1904–1981; American)
FANTASY - PREHISTORIC LEAF, 1948
watercolor and gouache mounted on masonite
23 x 31 3/4 in.
lower right center
Signed "Vance Kirkland 1948".
VK1948.01



Vance Kirkland (1904–1981; American)
SEA MYSTERIES, 1950
watercolor, gouache and denatured alcohol on paper
22 x 30 in.
lower right corner
Signed "Kirkland 1950".
VK1950.02



Vance Kirkland (1904–1981; American)
TERRAIN FROM AN AEROPLANE, 1952
watercolor and gouache on paper
31 x 22 1/2 in.
lower right corner
Signed "Kirkland 1952".
VK1952.10



Vance Kirkland (1904–1981; American)
RONDA, SPAIN, 1930
watercolor on paper
14 3/4 x 19 3/4 in.
lower left corner
Signed "RONDA SPAIN 1930 VANCE H. KIRKLAND"
VK1930.09

New On View Watercolor Room



Vance Kirkland (1904–1981; American)
TROUT STREAM NEAR INDIAN RIVER (Michigan), 1927
watercolor on paper
15 x 20 in.
lower left corner
Signed "Vance H. Kirkland.-1927-".
VK1927.14



Vance Kirkland (1904–1981; American)
COLORADO NIGHT, RED ROCKS, 1938 Ed. 23/25
lithograph
18 3/4 x 14 1/2 x 3/4 in.
bottom
Signed "Colorado Night 23/25 1938" and "Vance Kirkland" at bottom
corners.
P10.03



Vance Kirkland (1904–1981; American)
ANIMAL, ROOT AND PLANT FORMS EIGHT MILLION YEARS AGO, 1945
ink on paper
13 3/4 x 16 3/4 in.
lower right corner
Signed "Kirkland 1945".
P01.34

New On View Studio Exhibition Room



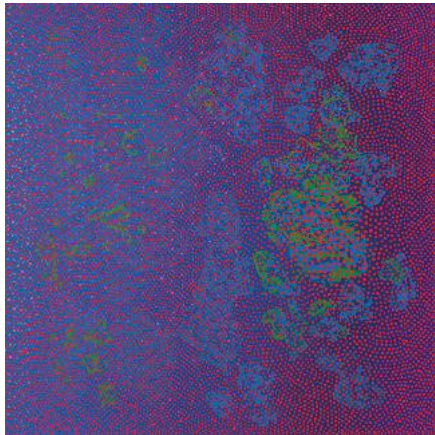
Vance Kirkland (1904–1981; American)
VILLA IMPERIALE, 1960
oil paint & water on linen
46 1/2 x 47 1/2 in.
lower right corner
Signed "Kirkland 1960 (14)".
VK1960.14



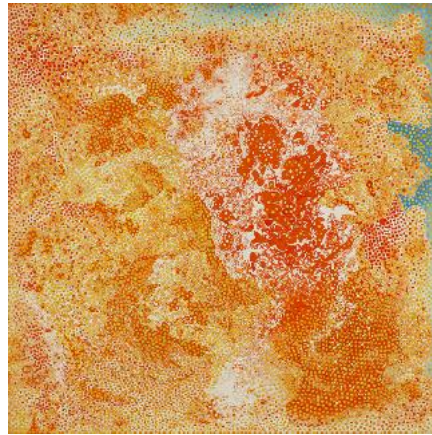
Vance Kirkland (1904–1981; American)
MEMORIE D'ERCOLANO, 1960
oil paint & water on linen
39 1/2 x 47 1/2 x 1 1/2 in.
lower left corner
Signed "Kirkland 1960 (25)".
VK1960.25



Vance Kirkland (1904–1981; American)
SPACE No. 14, 1966 (Einstein Series), 1966
oil on linen
30 x 30 in.
lower center
Signed "Kirkland (14) 1966".
Gift of Evelyn Chambers.
VK1966.14



Vance Kirkland (1904–1981; American)
SCARLET VIBRATIONS ON GREEN MYSTERIES IN BLUE SPACE, 1972
oil paint & water on linen
50 x 50 x 1 3/4 in.
lower left corner
Signed "Kirkland 1972-13".
VK1972.13



Vance Kirkland (1904–1981; American)
ASPEN VIBRATIONS, 1973
oil paint & water on linen
30 x 30 in.
lower right center
Signed "Kirkland 1973-17".
VK1973.17



Vance Kirkland (1904–1981; American)
BLUE MYSTERIES NEAR SCORPIO, 1977
oil paint & water on linen
66 x 75 in.
lower left corner
Signed "Kirkland 1977 (7)".
VK1977.07

New On View Studio Exhibition Room



Robert Mangold (1930–2023; American)

CATBOX, 1964

metal

13 7/8 x 11 1/2 x 6 5/8 in.

unsigned

2004.0002

New On View Studio Workroom



Vance Kirkland (1904–1981; American)
RED FLASH IN SPACE, 1960
oil paint & water on linen
46 x 40 in.
lower left corner
Signed "Kirkland (2) 1960".
VK1960.02



Vance Kirkland (1904–1981; American)
EXPLOSIONS OF ENERGY ON A SUN 70 BILLION LIGHT YEARS FROM EARTH,
1980
oil paint & water on linen
50 x 50 in.
lower right corner
Signed "(10) Kirkland 1980".
VK1980.10



Vance Kirkland (1904–1981; American)
*EXPLOSIONS OF ENERGY ON A SUN 24 BILLION LIGHT YEARS FROM
EARTH*, 1980
oil paint & water on linen
20 x 20 in.
lower left corner
Signed "1980 (18) Kirkland".
VK1980.18



Vance Kirkland (1904–1981; American)
EXPLOSIONS ON A SUN 15 BILLION LIGHT YEARS FROM EARTH, 1980
oil paint & water on linen
36 x 36 in.
lower left corner
Signed "1980 Kirkland (6)".
VK1980.06

New On View Gallery 17 Colorado Ceramics Corridor



Jack Canepa (1927–2017; American)

SPRINGFALL, 1959

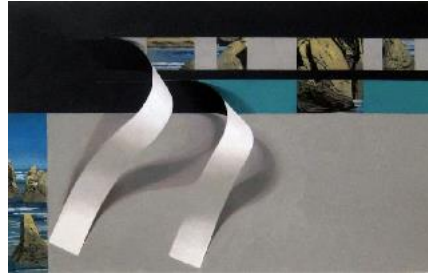
oil on canvas

52 3/4 x 54 1/2 in.

lower right corner

Signed "J. Canepa, lower right corner, and "J. Canepa '59" on verso.

2006.0746



Luis Eades (1923–2014; English, b. Spain)

PACIFIC, 1974

oil on panel

23 3/8 x 35 3/8 in.

unsigned

2018.06.020

New On View Visitor lounge



Mark Dickson (b. 1946; American)

AUTUMN, 1993

oil on canvas

48 x 48 in.

verso

right sign of frame signed, "DICKSON" in black marker

2017.38.001



Jerry Johnson (b. 1938; American)

ARCADE, 1981

acrylic on canvas

30 x 30 x 1 3/4 in.

verso

Signed "J. Johnson / '81"

2018.100.001